



MERRY  
CHRISTMAS

FP24

FP24



DESPITE THE PANDEMIC  
WE HAVE PUT IN  
OVER  
500  
VOLUNTEER HOURS

EQUAL TO  
OVER  
60  
NORMAL WORKING DAYS

*Great work  
Thank you*

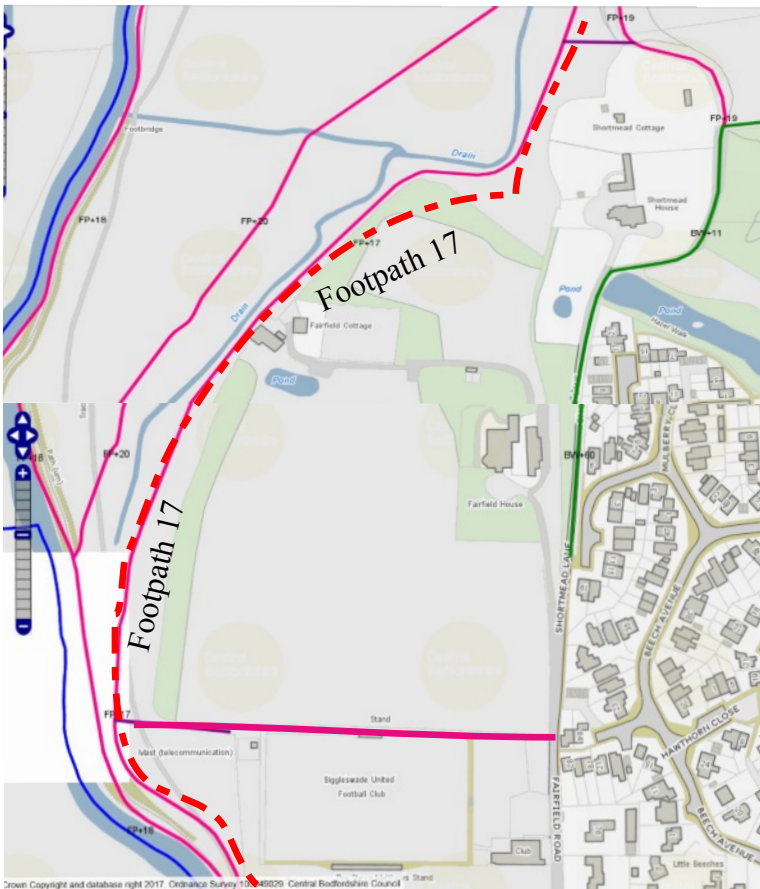
# OUR ACHIEVEMENTS IN 2020

RIPPLE TEAMS WORKED IN  
15 LOCATIONS FOR CENTRAL BEDFORDSHIRE &  
4 LOCATIONS FOR BEDFORD BOROUGH  
SMALL TEAMS 1,2,3 PEOPLE WORKED IN  
3 LOCATIONS FOR CENTRAL BEDFORDSHIRE  
13 LOCATIONS FOR BEDFORD BOROUGH

# RIPPLE ...TUESDAY 8<sup>th</sup> December

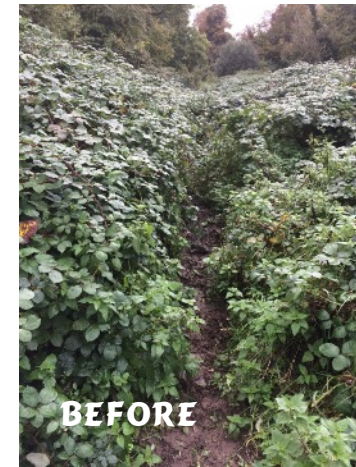
Biggleswade Footpath 17.

From end of Biggleswade United FC ground to  
Path junction by Shortmeade House.



The rain over the last few days has not made any path easy to clear but being optimistic and hoping for some drying out over the next few days we can do **The sections that are being encroached upon by brambles** And shrubs plus re setting the marker.

Footpath 17



BEFORE



AFTER



BEFORE



AFTER



BEFORE



AFTER





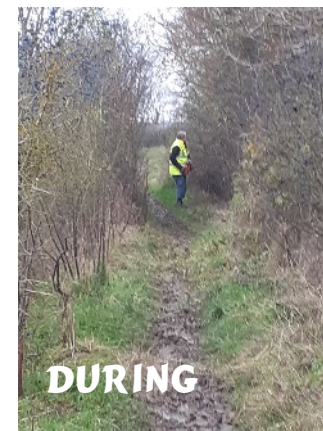
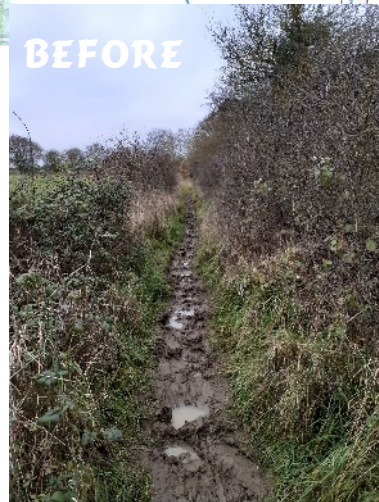
## COPLE: Water End THURSDAY 10<sup>th</sup> December

Clearance of approx 100metres

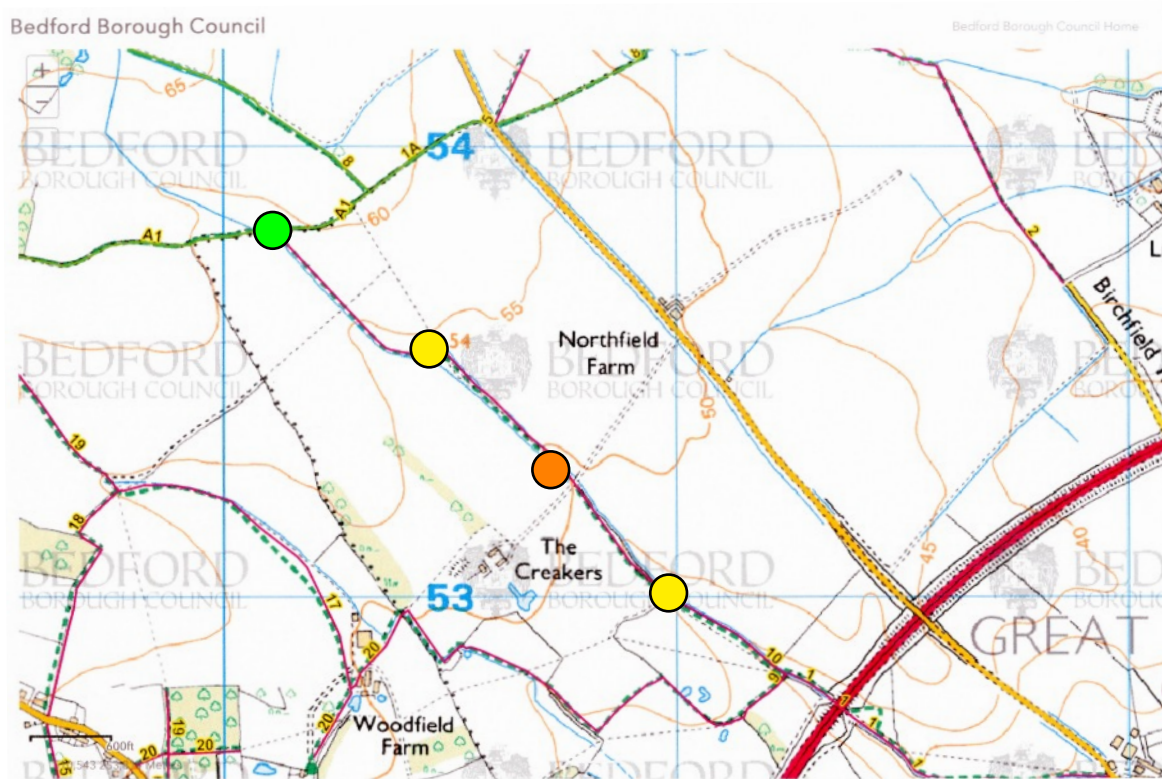
Footpath 7 from junction with  
Brideway 1. [REDACTED]

This is approximately 250 metres from road.

New marker post to put in ●







## RENHOLD TUESDAY 15<sup>th</sup> DECEMBER at 9-30

Putting in New Post(s). FP10 ●  
 Re-setting old post FP10 ●  
 Small amount of Clearance BWA1 FP 10. ●  
 Spread over 1.21km.  
 Permission from farmer obtained  
 Permission to park obtained.

All work done. Thank you

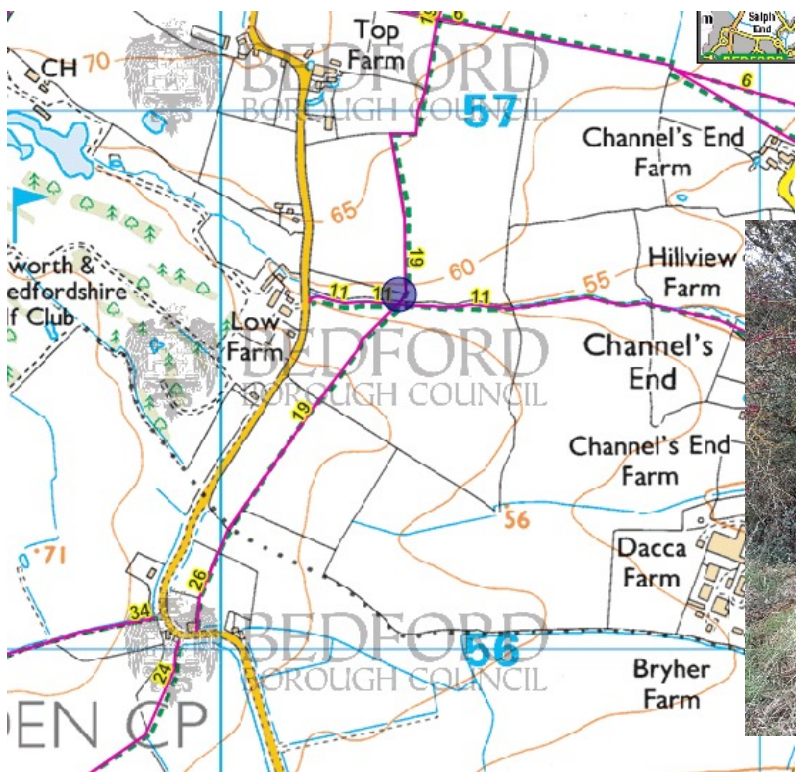




## RISELEY.... East .. Brambles and water making path impassable

The BW A12 & BW 38 where the gap was narrow, the water was 6" to 8" deep on the western side and deep mud on the eastern side. On the western side the post is old, leaning and needs replacing . Both post need replacing as they old and rotten  
Path widened to width of original bridge and users can now avoid the water and the mud.  
Posts still to be done when posts available and mud free access.

## Path Widened and Brambles cleared



## COLMWORTH. Bridge blocked

### Junction of FP11 & 19.

Path over bridge cleared. Bridge rails OK Wooden bridge some of the wooden strips are rotting but currently only 2<sup>nd</sup> up on bottom right hand picture gives cause for concern. All very wet may dry out and harden up.

